



FLEXIBLE HANGING SOLUTIONS

# ArtiTeq®

hanging and display systems

**FOR THE HEALTHCARE AND CARE SECTORS**

ARTITEQ.COM



# Artiteq®

## homely and user convenience

### Flexibility and ambience side by side

The ambience in healthcare and care establishments, nursing homes and care hotels plays a crucial role. A homely environment enhances the well-being of residents and patients, whether their stay is short or long-term. In these sectors, interior and wall decorations are indispensable; not only do they offer a safe feeling, but also provide the required flexibility.

Personal elements, such as photo frames and memories, add warmth to the room of a patient or resident. As patients or residents often change rooms regularly, it is important that wall decorations can be hung easily, without damaging the walls. Artiteq's hanging systems offer a perfect solution for this; they are flexible, practical and easy to use. Artiteq's systems also help create an atmosphere of comfort and familiarity in corridors, reception areas, restaurants and recreational spaces.

Whether you wish to hang pictures, acoustic panels or signage, Artiteq offers versatile solutions that align perfectly with the needs of the healthcare and care sectors.

**Artiteq combines ambience, convenience and functionality to create a healthcare or care setting that feels like home.**

## CONTENTS

INTRO

CLICK RAIL

TOP RAIL

INFO RAIL

4

6

8

10

DISPLAY IT

PICTURE MOUSE & LOOP MAKER

SOLUTIONS FOR SUSPENDED

CEILINGS

PRODUCT SPECIFICATIONS

12

14

15

16

- sustainable building management
- flexible and easy to use
- multifunctional and safe



# Artiteq®

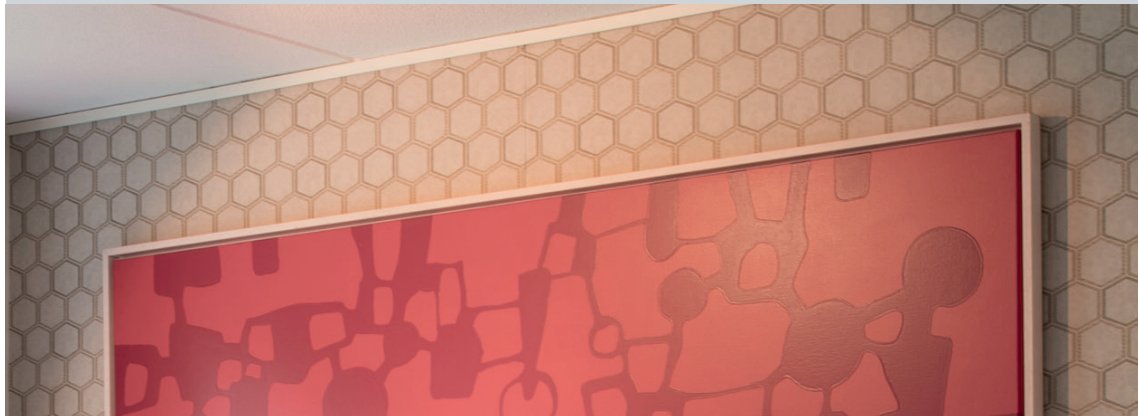
## the power of art in healthcare

### Art in motion

In healthcare and care establishments, art breathes life into every room. By featuring varying works from different artists, a dynamic and inspirational environment is created that enhances the well-being of both patients and visitors.

The Artiteq flexible hanging systems allow works of art to be hung, moved around or replaced easily, without damage to the walls. This aligns perfectly with sustainable building management.

In new build or renovation projects, Artiteq offers the choice of wall and ceiling mounted hanging systems, or integrated hanging systems. Either of these options enable different objects to be hung on the walls without causing permanent damage to walls.





## CLICK RAIL

### wall-mounted picture hanging system

The Artiteq Click Rail is a versatile picture hanging system that is perfectly designed to meet the evolving needs of healthcare and care settings. This system requires once-only mounting on the wall using the Click & Connect system, which ensures fast and simple installation.

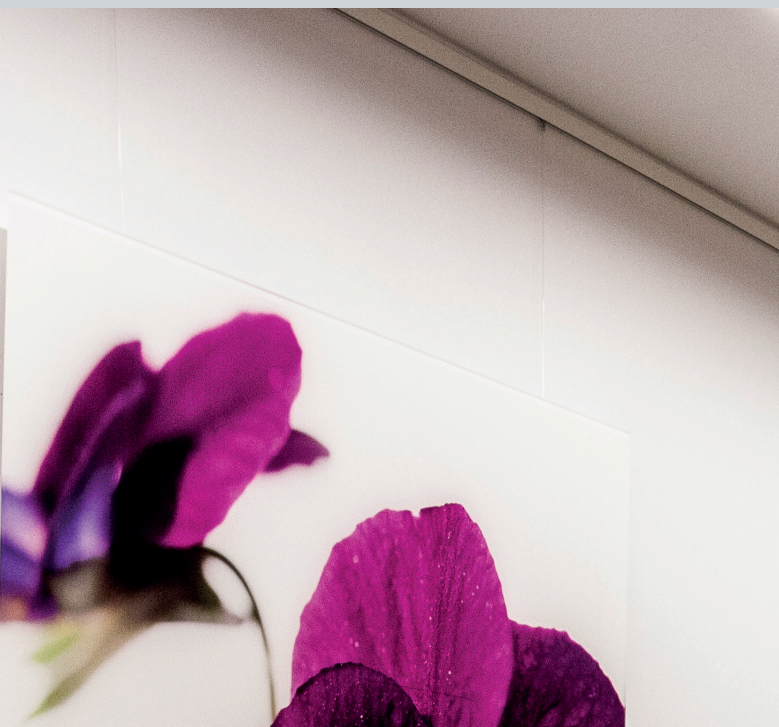
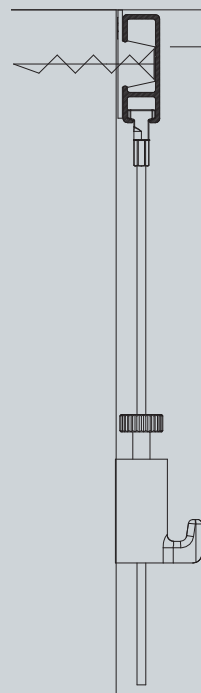
In healthcare and care establishments, like hospitals, care hotels and residential care facilities, the Click Rail offers a practical solution for the flexible hanging, repositioning and replacing of pictures, photo frames and other decorations. The rail can be mounted flush against the ceiling and, if preferred, can be painted to match the wall or ceiling colour, allowing the system to blend almost invisibly and seamlessly into the room's design.

Using hanging wires and hooks, wall decorations can be placed at any desired location or height on the picture hanging system, without drilling new holes or causing any damage to the walls.

In a healthcare or care setting, in which tranquillity, flexibility and a homely atmosphere are paramount, the Click Rail offers a sustainable solution. The system not only enhances the aesthetic appeal of a room, but also provides practical ease for regularly changing décor, or adapting spaces.

With the Click Rail, Artiteq offers a reliable, flexible and almost invisible wall solution that fits perfectly within the healthcare and care sectors.

Click Rail



- simple installation
- sustainable and versatile
- flexible use



- invisible integration
- maximum flexibility
- easy maintenance

## TOP RAIL

the perfect rail in healthcare

### Wall and ceiling mounted hanging systems: practical and flexible

The Artiteq Top Rail offers a smart and invisible solution for hanging pictures and wall decorations in healthcare and care settings. This system is mounted flush against the wooden side strip of a suspended ceiling, which allows the rail to blend seamlessly into the ceiling, making it almost invisible.

In hospitals, care hotels and healthcare and care establishments, where spaces are often used for multiple purposes, the Top Rail offers unparalleled flexibility. Without visible fixings that distract the eye from the space, pictures, photo frames and other decorations can be hung anywhere along the rail. The hanging wires click easily into the rail and can effortlessly be moved or adjusted to suit the needs of the space.

This means the Top Rail is ideal for corridors, waiting areas, patient rooms and reception areas, where a calm and organised appearance is essential. As the system is mounted to the ceiling, the walls remain free of holes and damage, ensuring the space has a long-lasting, pristine finish.

The Top Rail perfectly aligns with the unique needs of modern healthcare and care establishments, where aesthetics, functionality and flexibility converge.

The Artiteq Top Rail offers a sleek and sustainable wall solution that fits perfectly within dynamic healthcare and care settings.

Top Rail

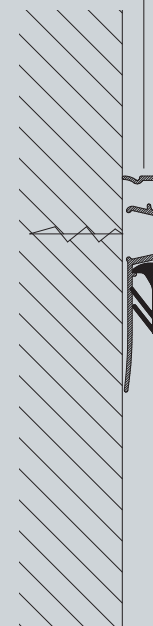




- flexible and efficient
- simple mounting
- versatile use



#### Info Rail



### INFO RAIL

create a homely feeling

Creating a homely and organised environment is essential for (temporary) residents in healthcare and care establishments and care hotels.

The Artiteq Info Rail offers a practical solution that is a valuable addition to hospital rooms and care facilities. Even though there is a high turnover in hospital rooms or care apartments, every patient will want to make their room feel more personal and homely during their short stay. The Info Rail allows postcards that are received, children's drawings, memories of the past, such as old photos, but also personal documents to easily be hung. Thanks to the rubber clamping mechanism in the Info Rail and its easy wall mounting, this system ensures a stable and reliable attachment.

For added functionality, Artiteq offers two additional accessories for the Info Rail, which can be effortlessly attached to the rail with a single click:

- **Support Clip:** to display a frame or artwork received from a grandchild in a beautiful manner.
- **Storage Clip:** a small storage tray for small objects, such as pens, markers or even a little plant.

With the Info Rail, Artiteq offers a smart and reliable solution for healthcare and care establishments.



## DISPLAY IT

professional and well-organised in the healthcare and care sectors

In healthcare and care establishments, clear, concise communication and organised displays are essential. The Artiteq Display It system provides a professional and well-organised solution for displaying notices, documents and important information.

The plastic frames of the Display It system are easy to mount and can effortlessly be adjusted to the desired height. The E-clip allows documents to be swiftly replaced, without removing the frame from the system. Furthermore, the E-clip allows multiple frames to be connected to one another, enabling both horizontal and vertical displays.

In hospitals, care hotels and other healthcare and care establishments, Display It is especially effective for displaying ward information, patient details, or important announcements in corridors, waiting areas or nursing stations.

There are two versions of the system:

- **Display It Flex:** flexible mounting in combination with a hanging rail and rods, which can easily be moved along the rail to make changes to the display.
- **Display It Fixed:** fixed mounting for a permanent and stable display in a specific location.

The versatility and ease of use of Display It creates a well-organised and accessible communication space within healthcare and care establishments.

With Display It, Artiteq offers a reliable and professional solution for clear communication in every healthcare and care setting.



- simple and fast changeover
- professional appearance
- flexible displays







## PICTURE MOUSE & LOOP MAKER

flexible displays in the healthcare and care sectors

Memories of the past, photos and postcards that are received create a familiar and homely feeling. Our hanging systems allow these memories to be hung and changed in a flexible way.

### Picture Mouse: for photos and postcards

The Picture Mouse is a handy hanging cord for displaying several postcards and photos. The system can be paired with an Artiteq hanging rail or installed independently using the Picture Mouse Solo. With transparent clips and colourful Mouse Magnets, memories of the past, such as photos or postcards that are received, can easily be attached and changed, meaning this system is ideal for patient rooms and corridors.

### Loop Maker: versatile application

The Loop Maker enables you to create a firm loop with a Perlon 2-mm hanging wire. This enables picture frames, but also decorations and lightweight objects to be hung securely.

Both systems provide flexible, personal and organised décor in healthcare and care settings, without damaging walls or ceilings.



## SOLUTIONS FOR SUSPENDED CEILINGS

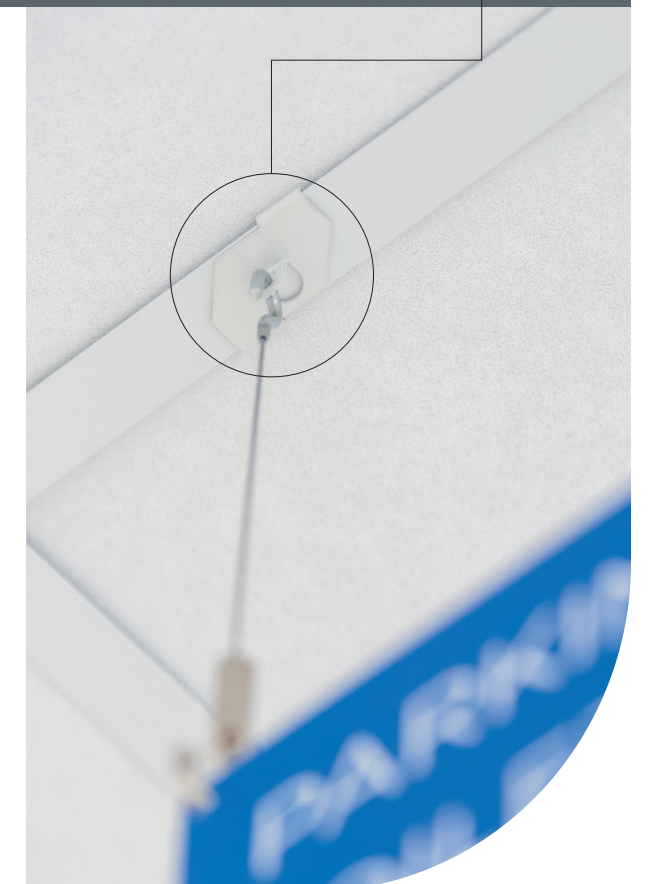
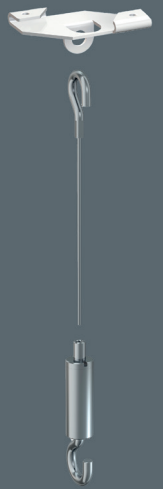
clear route, smartly organised

In healthcare and care establishments, like hospitals, care hotels and residential care facilities, clear signage showing routes to follow is essential for safety, it supports logistics processes and helps patients and visitors to easily find their way around. The Artiteq signage hanging systems, such as the Suspended Ceiling Hanger, Suspended Ceiling Clip and Suspended Ceiling Clip Hanger, seamlessly integrate signage into suspended ceilings without the need for drilling. This allows walls to remain free of fixings or damage, whilst ensuring that the signage remains secure and highly visible.

The systems are flexible and easily adjustable. Signage can be quickly relocated or updated without major modifications or additional repair costs. This means these systems are ideal for evolving healthcare and care settings, where flexibility is important.

With their minimalist design, these signage hanging systems have a professional appearance without being a distraction. Whether in patient rooms, corridors or waiting areas, the route remains clear and intuitive.

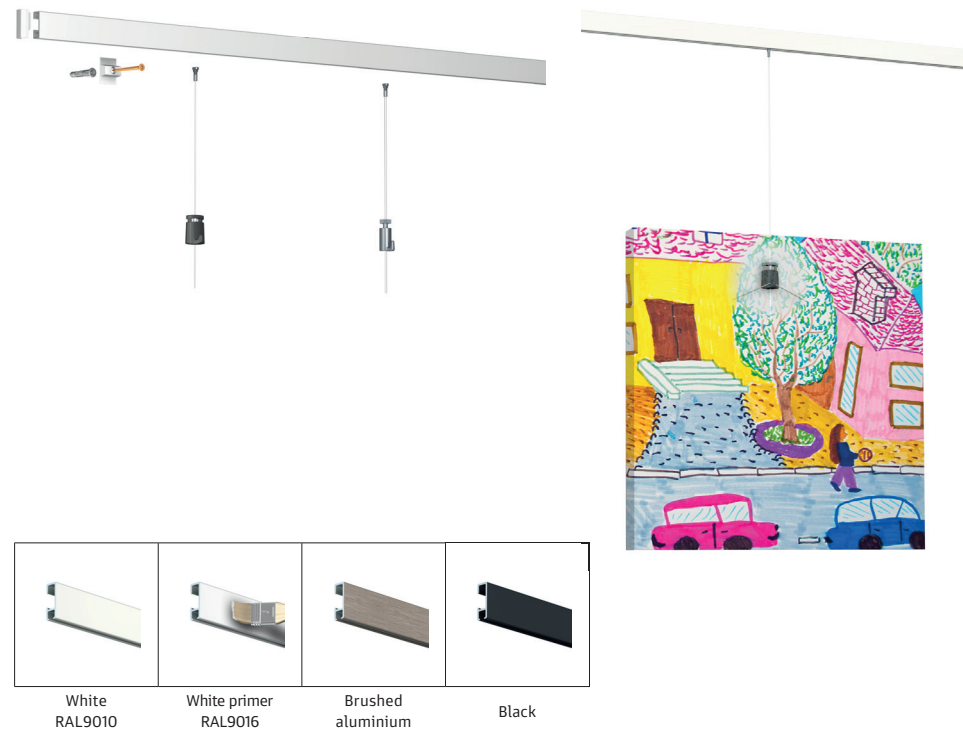
With signage hanging systems, Artiteq offers a sustainable and flexible solution for clear wayfinding in every healthcare and care setting.



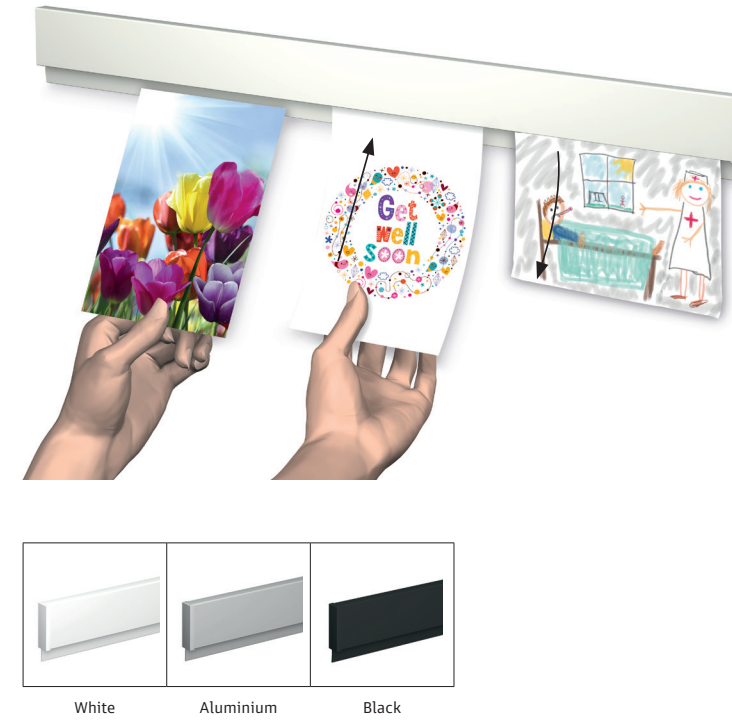
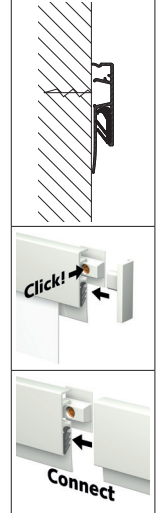


**CLICK RAIL**

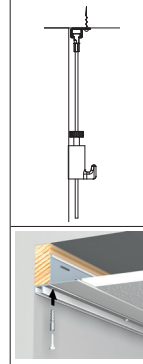
wall-mounted picture hanging system

**30**  
KG/M**10**  
YEAR  
WARRANTY**INFO RAIL**

essential hanging system in the healthcare and care sectors

>**80**<sub>G</sub>  
>**2**<sub>MM</sub>**10**  
YEAR  
WARRANTY**TOP RAIL**

in combination with suspended ceilings

**20**  
KG/M**10**  
YEAR  
WARRANTY**SUPPORT/STORAGE CLIP**

perfect presentation and handy storage



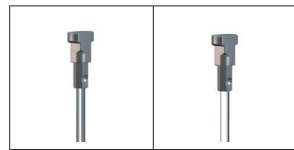


**DISPLAY IT FLEX**

change content easily and quickly



Content is easy to change.



Steel wire

Perlon wire

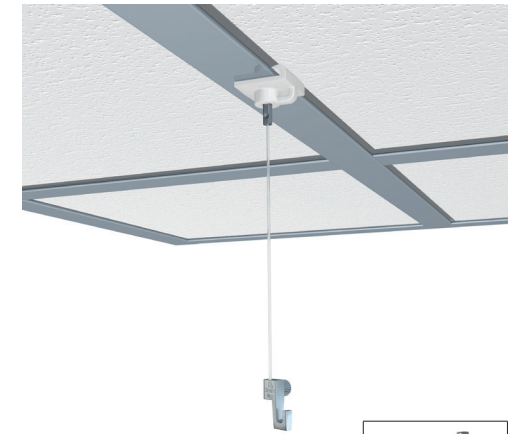
**10**  
YEAR  
WARRANTY**SOLUTIONS FOR SUSPENDED CEILINGS**

clear route, smartly organised



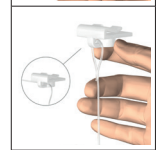
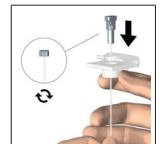
White

Black



White

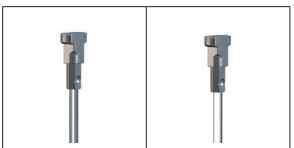
Black

**DISPLAY IT FIXED**

professional and well-organised in the healthcare and care sectors

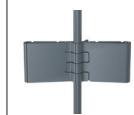


Content is easy to change.

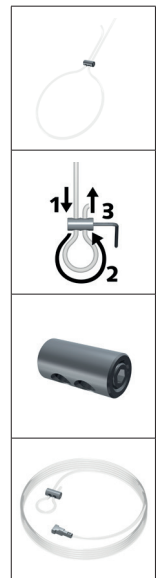
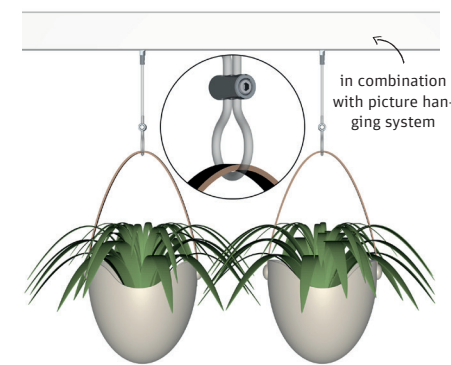


Steel wire

Perlon wire

**10**  
YEAR  
WARRANTY**PICTURE MOUSE & LOOP MAKER**

flexible displays in the healthcare and care sectors







ARTITEQ

Herastraat 39  
5047 TX Tilburg  
The Netherlands

+31 (0)13 572 90 70  
[info@artiteq.com](mailto:info@artiteq.com)  
[artiteq.com](http://artiteq.com)