

# UP RAIL



The Up Rail is the leading ceiling rail par excellence; the rail is especially suitable when used in combination with concrete. The picture hanging system is clicked into place using clips (3 clips each metre) which are attached to the ceiling. The beautiful rounded shape of the rail fills the space between the wall and ceiling, therefore the picture hanging system is discrete and unobtrusive. The maximum bearing capacity of 20 kg/m makes the Up Rail a solid and reliable hanging system. The rail has a white, primed finish: the hanging rail can be painted in any preferred colour (for example, in the colour of the wall or ceiling). The Twister hanging wires can be clicked anywhere along the rail. If a ceiling mounting is required, for example if the walls may not be damaged or because it is not possible to attach a rail to the walls, the Up Rail is the ideal solution for flexible adornment of the walls.

## RAIL



UP RAIL - WHITE PRIMER RAL 9016		FASTENER KIT WHITE		UP RAIL - BLACK STRUCTURE		FASTENER KIT BLACK	
ARTICLE NO.	200 cm	05.06200	4098	05.06210	5096		
ARTICLE NO.	300 cm	05.06300	4099				

## CONTENT FASTENER KIT

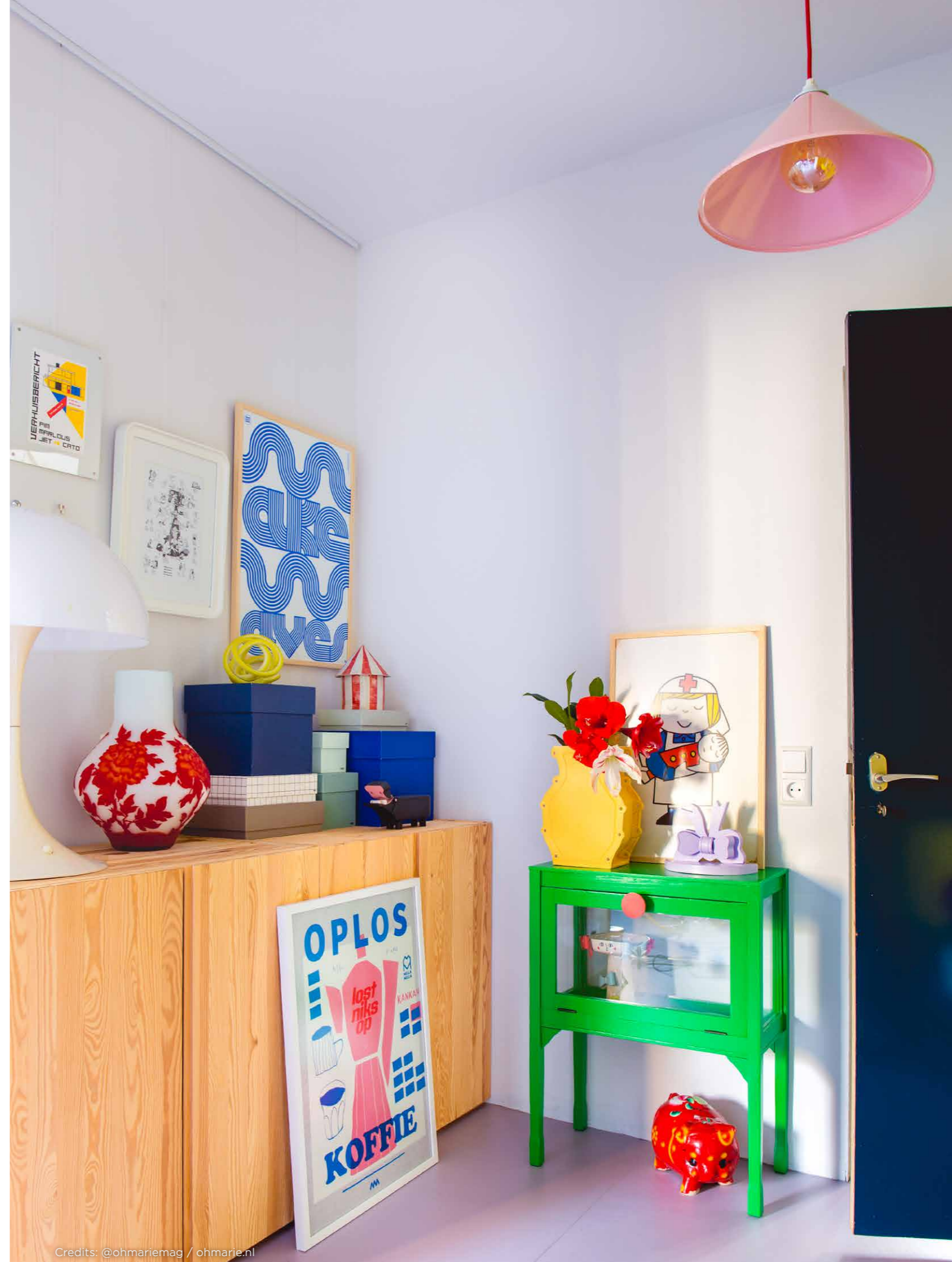


installation video



			QUANTITY 200 cm	QUANTITY 300 cm
05.06010	CLICK&CONNECT		6x	9x
9.4945	SCREW		6x	9x
9.4934	PLUG		6x	9x
05.06020 (WHITE) / 05.06030 (BLACK)	SET END CAPS L&R		2x	2x
2563	INSTRUCTION		1x	1x

ALL MOUNTING MATERIALS MAY BE ORDERED SEPERATELY, SEE PAGE 40



Credits: @ohmariemag / ohmarie.nl