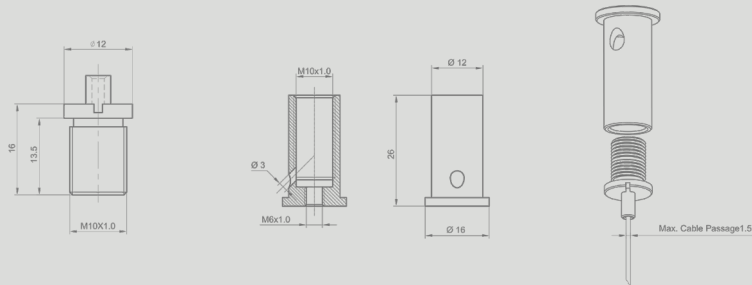


# PRODUCT WARRANTY

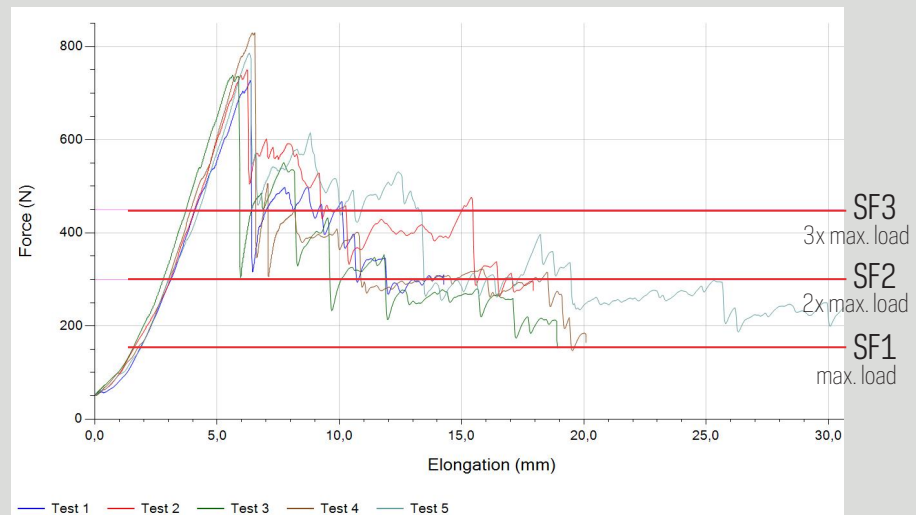


## ▶ QUALITY CONTROL

Artiteq has its own Quality Control department which check the safety in relation to the weight that can be hung from the products, but also the appearance and functionality of the products. Additionally, this department determines and tests which plugs and / or screws are best to be used in combination with our products. Artiteq has selected the Fisher UX 5x30 R plug to be used in combination with its Sign Hanging systems.



Test results Ceiling suspension auto grip 1,2mm (7807.140)  
with Steelwire + slider 1,2mm (7807.210)



## ▶ FISHER UX 5x30 R plug

The Fischer UX 5x30 R plug can be used in different kinds of materials, such as concrete, stone and plasterboard. Depending on the material, the plug can support a maximum load of 30 kg. The drill used with the plug must have a diameter of 5 mm. The plug is 30 mm in length. The screw used with the plug is 45 mm long and has a diameter of 3.5 mm (to be used in combination with a PZ2 bit). Visit the website of Fischer for more information.



## ▶ MAXIMUM LOAD DETERMINATION

To determine the maximum load of a sign hanging system, it must be known what type of mounting materials will be used and what surface (i.e. type of material) these will be attached to. The components of the signing hanging system all have a maximum bearing capacity. This is the maximum bearing capacity for the component itself and not the maximum bearing capacity that must be taken into account for the system as a whole. For the whole system, the load capacity that is recommended for the mounting material in combination with the respective base material, takes precedence.

# PRODUCT WARRANTY



For every Sign Hanging system, the weight that you wish to hang must be balanced against the maximum load capacity of the mounting material. If systems are hung from other hanging components, such as recessed ceilings, you have to know the maximum load of this hanging component before fitting our systems. The tables below show the maximum load capacity for the Fischer plug in combination with different materials and the maximum bearing capacity for each component for the different Sign hanging systems.

## ▶ USE

TYPE	UX 5X 30		
RECOMMENDED LOADS IN THE RESPECTIVE BASE MATERIAL $F_{REC}^{2)}$			
Concrete	$\geq$ C20/25	[kN]	0,30
Solid brick	$\geq$ Mz 12	[kN]	0,20
Perforated sand-lime brick	$\geq$ KSL 12	[kN]	0,30
Vertically perforated brick	$\geq$ Hlz 12	[kN]	0,20
Aerated concrete	$\geq$ AAC 4	[kN]	0,15
Gypsum plasterboard	12,5 mm	[kN]	0,10
Gypsum plasterboard	25 mm	[kN]	0,10
Gypsum fibreboard	(Fermacell)	[kN]	0,20
Gypsum block	$\rho \geq 0,9 \text{ kg/dm}^3$	[kN]	-



<sup>1</sup> Required safety factors are considered.

<sup>2</sup> Valid for tensile load, shear load and oblique load under any angle

ART. NR	DESCRIPTION	MAX. LOAD CAPACITY
7807.060	Suspension bracket Xpo Rail 1,2 mm	15 kg
7807.200	Steelwire + slider 1,2 mm 200 cm black	15 kg
7807.210	Steelwire + slider 1,2 mm 200 cm nickel	15 kg
7807.100	Ceiling Bracket black C01BL	15 kg
7807.110	Ceiling Bracket nickel C01NI	15 kg
7807.140	Ceiling Suspension auto grip 1,2 mm CS01NI	15 kg
7807.350	Spool steelwire 7x7 1,2 mm 10 m	15 kg
7805.052	Loop Hanger 1,0 mm - 1,5mm	10 kg
7807.120	Recessed Ceiling Clip 20 mm	5 kg
7807.130	Recessed Ceiling Clip 20 mm + suspension auto grip 1,2 mm	5 kg
7807.310	Steelwire + hook 1,2 mm 300 cm	15 kg
7807.010	Steelwire Hook auto grip 1,2 mm ST01BL	15 kg
7807.020	Steelwire Hook auto grip 1,2 mm ST01NI	15 kg
7807.030	Steelwire Hook auto grip 1,2 mm ST02NI	15 kg
7807.040	Steelwire Hook auto grip 1,2 mm ST03NI	15 kg
7807.400	Acoustic Spring 01-NI	5 kg
7807.050	Steelwire Clamphook auto grip 1,2 mm STC01NI	15 kg

