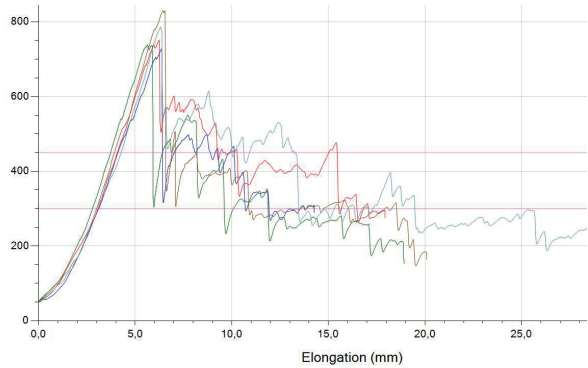


QUALITY CONTROL

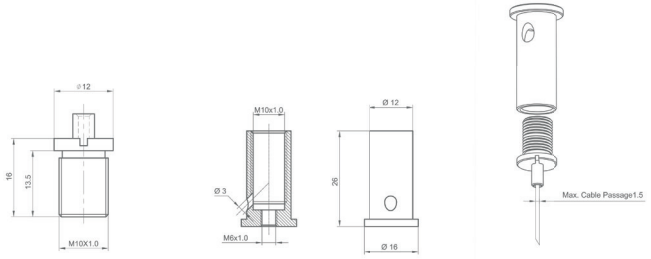
Artiteq has its own Quality Control department which check the safety in relation to the weight that can be hung from the products, but also the appearance and functionality of the products. Additionally, this department determines and tests which plugs and / or screws are best to be used in combination with our products. Artiteq has selected the Fisher DUO Power plug 5x25 to be used in combination with its Sign Hanging product range.



test results Ceiling suspension auto grip 1,2mm (7807.140) with Steelwire + slider 1,2mm (7807.210)



- Test 1 — Test 2 — Test 3 — Test 4 — Test 5



FISCHER DUO POWER PLUG 5X25

The Fischer Duo Power plug 5x25 can be used in different kinds of materials, such as concrete, stone and plasterboard. Depending on the material, the plug can support a maximum load of 30 kg. The drill used with the plug must have a diameter of 5 mm. The plug is 25 mm in length. The screw used with the plug is 38 mm long and has a diameter of 3.5 mm (to be used in combination with a PZ2 bit).

Visit the website of Fischer for more information.



MAXIMUM LOAD DETERMINATION

To determine the maximum load of a sign hanging system, it must be known what type of mounting materials will be used and what surface (i.e. type of material) these will be attached to. The components of the signing hanging system all have a maximum bearing capacity. This is the maximum bearing capacity for the component itself and not the maximum bearing capacity that must be taken into account for the system as a whole. For the whole system, the load capacity that is recommended for the mounting material in combination with the respective base material, takes precedence.



read more about our
guarantee and quality

USE / APPLICATION

For every Sign Hanging system, the weight that you wish to hang must be balanced against the maximum load capacity of the mounting material. If systems are hung from other hanging components, such as recessed ceilings, you have to know the maximum load of this hanging component before fitting our systems. The tables below show the maximum load capacity for the Fischer plug in combination with different materials and the maximum bearing capacity for each component for the different Sign Hanging systems.

RISK ANALYSIS & USER GROUP DEFINITIONS

Artiteq implements a robust approach to risk management throughout the lifecycle of its products, from design to application. The goal of this Risk Analysis is to identify, evaluate and migrate potential hazards that may impact product performance or user safety.

Artiteq products are designed for use by individuals and professionals with the appropriate level of technical understanding and responsibility. Children are not considered an intended user group and should not install, adjust, or handle Artiteq products without adult supervision.

Duopower		5 x 25	
Highest recommended loads ¹ for a single anchor. The given loads are valid for wood screws with the specified diamet			
Wood screw diameter	[mm]	4	
Min. edge distance concrete	C _{min} [mm]	30	
Recommended loads in the respective base material f _{rec} ²⁾			
Concrete	≥ C20/25	[kN]	0,40
Solid brick	≥ MZ 12	[kN]	0,30
Solid sand-lime brick	≥ KS 12	[kN]	0,50
Aerated concrete	≥ AAC 2 (G2)	[kN]	0,05
Aerated concrete	≥ AAC 4 (G4)	[kN]	0,25
Vertically perforated brick	≥ HLZ 12 (P ≥ 0.9 KG/DM ³)	[kN]	0,13
Perforated sand-lime brick	≥ KSL 12 (P ≥ 1.6 KG/DM ³)	[kN]	0,40
Gypsum block	(P ≥ 0,9 KG/DM ³)	[kN]	0,10
Gypsum fibreboard	12.5 mm	[kN]	0,24
Gypsum plasterboard	12.5 mm	[kN]	0,12
Gypsum plasterboard	2 x 12.5 mm	[kN]	0,13
Mattone Forato Typ F8		[kN]	0,30
Tramezza Doppio UNI 19		[kN]	0,15
Sepa Parpaing		[kN]	0,30

¹ Required safety factors are considered.

² Valid for tensile load, shear load and oblique load under any angle.

³ Load determination on plastered wall.



Art. nr.	Description	Max. capacity
7805.052	Loop Hanger 1,0 mm - 1,5 mm	10 kg
7807.060	Suspension bracket Xpo Rail 1,2 mm	15 kg
7807.200	Steelwire + slider 1,2 mm 300 cm black	15 kg
7807.210	Steelwire + slider 1,2 mm 300 cm nickel	15 kg
7807.100	Ceiling bracket black C01BL	15 kg
7807.110	Ceiling bracket nickel C01NI	15 kg
7807.140	Ceiling suspension 1,2 mm CS01NI	15 kg
7807.150	Ceiling bracket auto grip 1,2 mm D01BL black	15 kg
7807.160	Ceiling bracket auto grip 1,2 mm D01NI nickel	15 kg
7807.350	Steelwire 7x7 1,2 mm 10 m	15 kg
7807.360	Steelwire black 7x7 1,2 mm 3 m	15 kg
7807.120	Recessed Ceiling Clip 24 mm white	5 kg
7807.121	Recessed Ceiling Clip 24 mm black	5 kg
7807.125	Recessed Ceiling Clip eco white	1 kg
7807.126	Recessed Ceiling Clip eco black	1 kg
7807.130	Recessed Ceiling Clip 20 mm + suspension auto grip 1,2 mm	5 kg
7807.135	Drop Ceilinghanger	4 kg
7807.310	Steelwire + hook 1,2 mm 300 cm	15 kg
7807.010	Steelwire hook auto grip 1,2 mm ST01BL	15 kg
7807.020	Steelwire hook auto grip 1,2 mm ST01NI	15 kg
7807.030	Steelwire hook auto grip 1,2 mm ST02NI	15 kg
7807.040	Steelwire hook auto grip 1,2 mm ST03NI	15 kg
7807.050	Steelwire clamphook auto grip 1,2 mm STC01NI	15 kg
7807.070	Steelwire hook auto grip 1,2 mm STD01BL black	15 kg
7807.080	Steelwire hook auto grip 1,2 mm STD01NI nickel	15 kg
7807.400	Acoustic spring 01-NI	5 kg
7807.560	Drop Ceiling Clipphanger white	4 kg
7807.561	Drop Ceiling Clipphanger BLACK	4 kg
9.4404	Perlon 2 mm coil 100 m	15 kg
9.44215	Perlon 2 mm coil 500 m	15 kg
9.4431	Wire clamp 2 mm alu	15 kg



visit our website