



FLEXIBLE HANGING SOLUTIONS

**Artiteq<sup>®</sup>**  
ILLUME DUO RAIL



TWO FUNCTIONS.  
ONE LINE. ONE SYSTEM.  
THE ILLUME DUO RAIL.

# ILLUME DUO RAIL

LIGHT MEETS ART

In spaces where art, interior architecture, and ambiance merge, Illume Duo Rail defines a new standard. A minimalist rail system that combines hanging and lighting in a single elegant line: secure, flexible and fully integrated into the architecture of the space. Illume Duo Rail brings together Artiteq's aesthetics with advanced 48V lighting technology. The result is a system that moves beyond pure function, expressing the tranquility, balance and precision synonymous with high-end interior architecture. The system merges hanging and illumination into one minimalist, secure, and reliable whole, creating an innovative solution for environments where art, interior architecture and light quality converge. Designed for art collectors, galleries, museums, and offices where art is embedded in the spatial experience.



06

**RAIL**  
the foundation of Illume



10

**LUMINAIRE**  
light that embraces art



22

**CONNECTORS**  
details that are concealed

## CONTENTS

RAIL	06
LUMINAIRE	10
USE	20
CONNECTORS	22
ARTICLE NUMBERS	26

THE ILLUME DUO RAIL IS NOT AN ADDITION TO THE WALL, IT IS THE WALL.

AN ARCHITECTURAL ELEMENT THAT HARMONISES ART AND SPACE THROUGH A CONTINUOUS LINE OF LIGHT.

# ILLUME DUO RAIL

The foundation of the Illume concept

The 48V rail forms the heart of the system: powerful, discrete and aesthetically balanced. The proven Illume Click & Connect mounting system enables simple and stable installation. The integrated power supply remains invisible, while the rail can carry loads up to 60 kg/m. Available in matt white and matt black, for subtle integration, or a bold contrast.

**48 Volts means:**

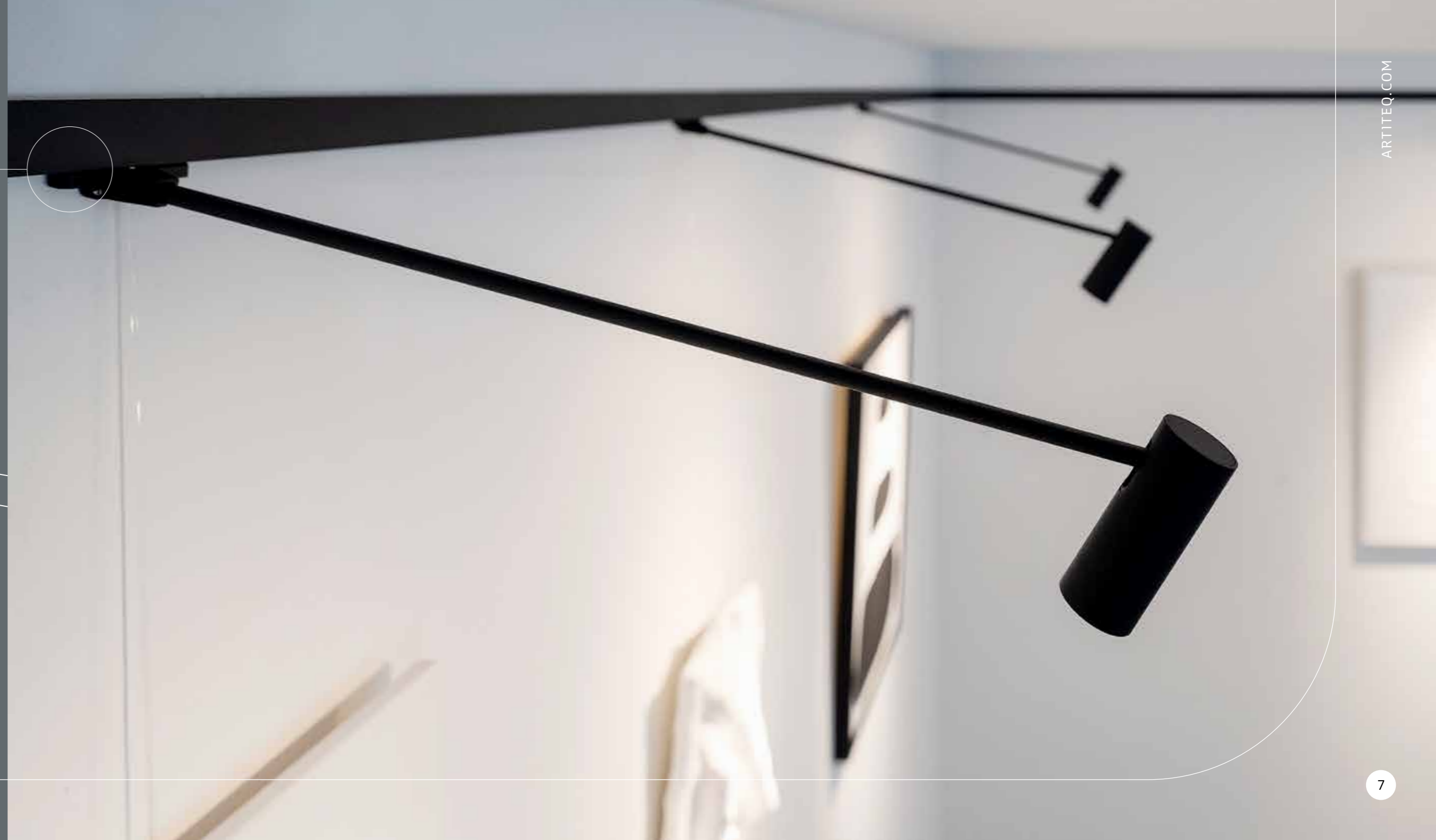
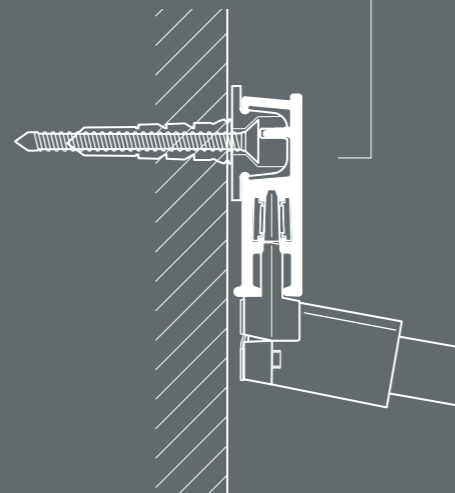


Lower current 48V



Reduced voltage drop

- **Lower amperage:** For the same power, a 48V system draws less power, resulting in reduced heat generation and greater efficiency.
- **Reduced voltage drop:** Ideal for long installations or large-scale projects, as reduced voltage drop over the cable length allows up to 12 metres of rail to be connected to a single driver.
- **Lower energy consumption** contributes to a more sustainable system.



Dedicated channel for the reliable Click&Connect connection



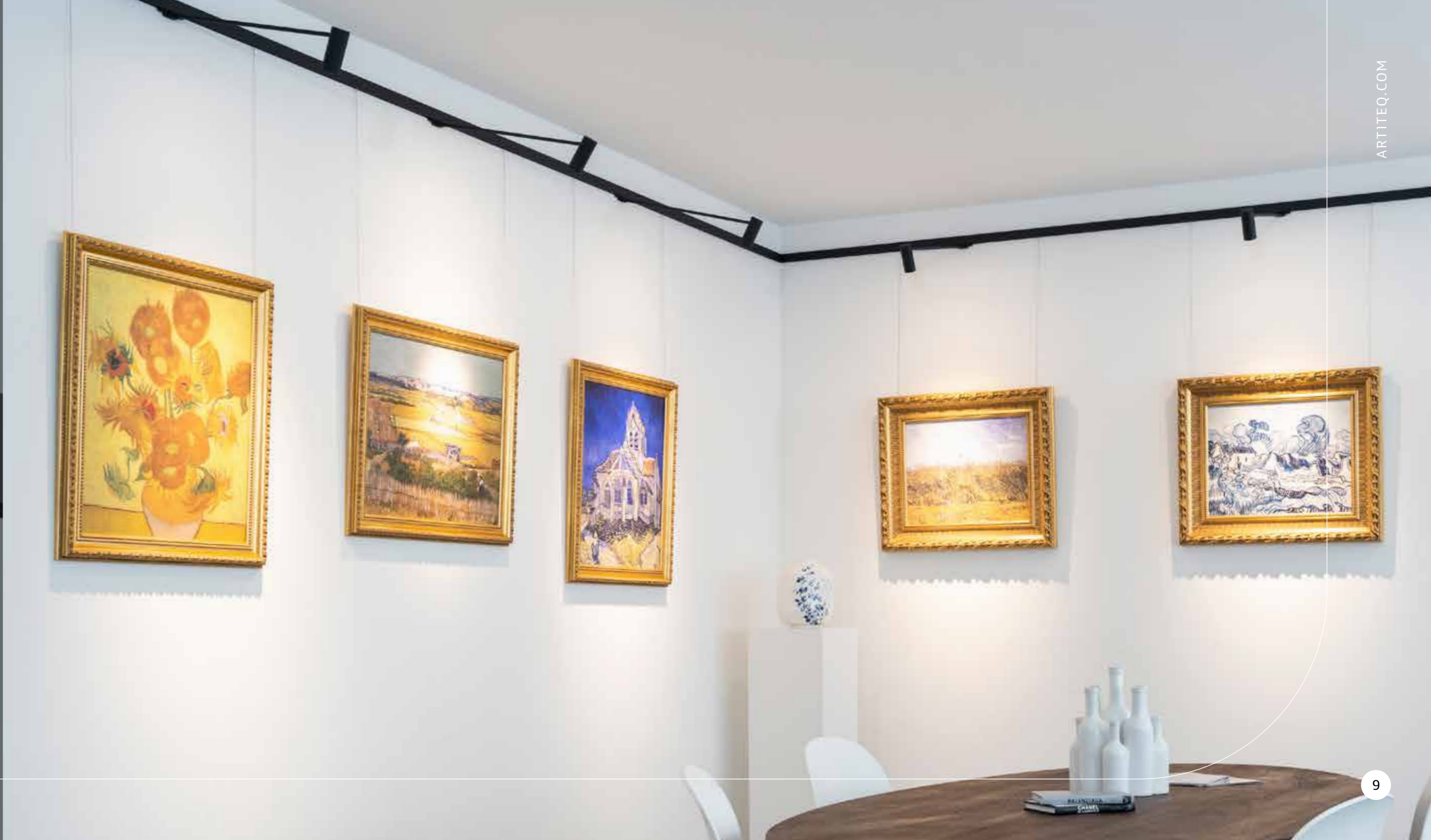
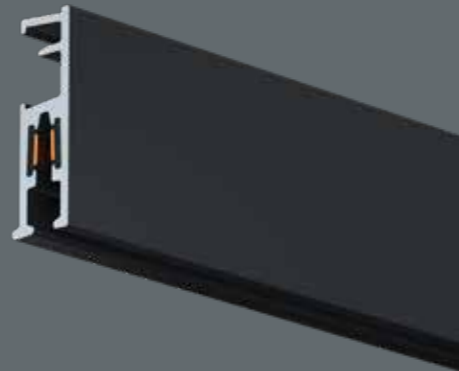
Dedicated channel for mounting, securing and positioning the Illume Beam luminaire



Dedicated channel for secure hanging and securing of the Artiteq Twister hanging wires



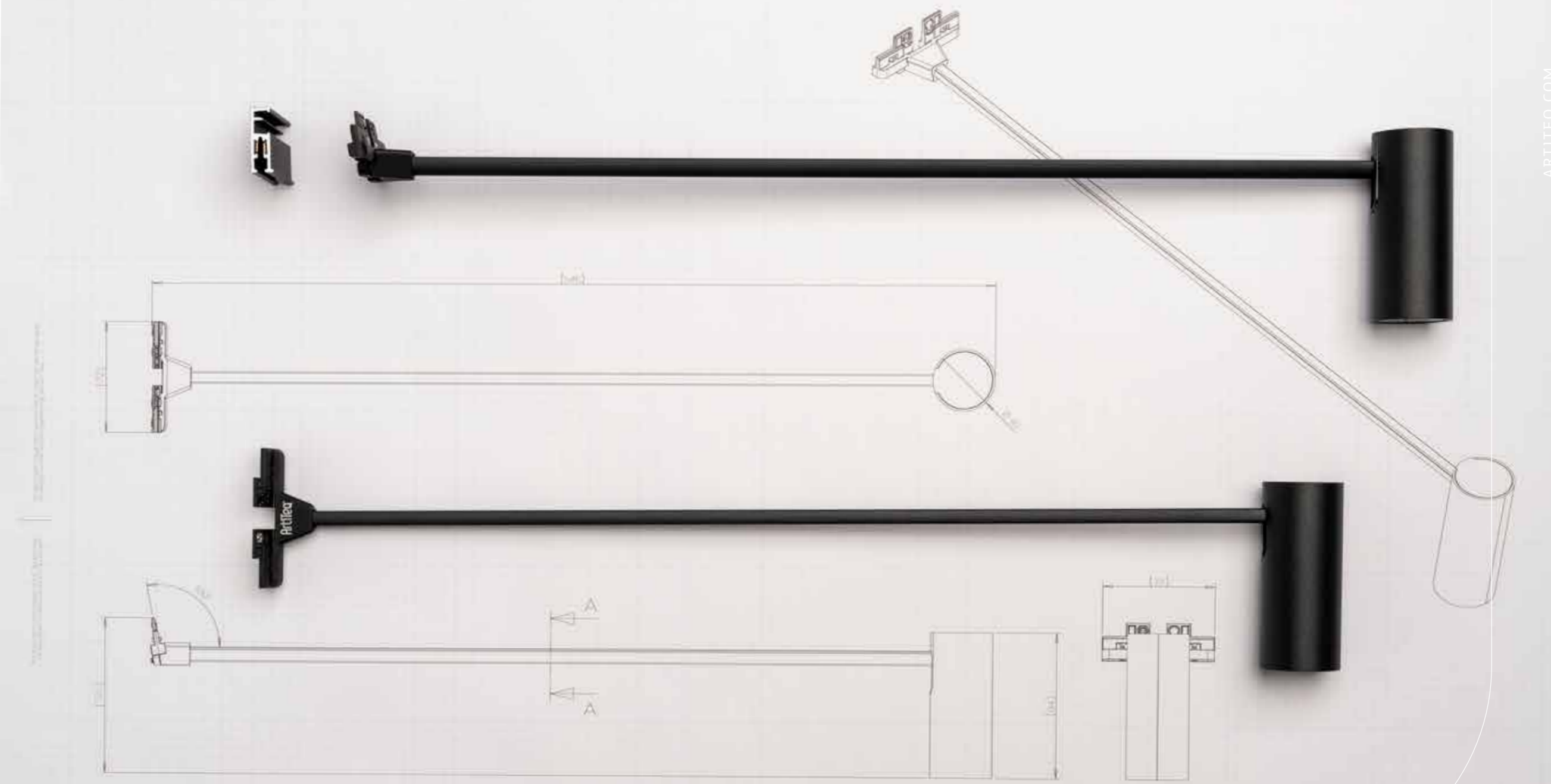
Easy and secure



# ILLUME BEAM

Light that brings art to life

With a CRI of 98++, the integrated LED delivers museum-quality daylight. The adjustable head (180°) and variable height allow precise control over the light beam. Available with 15°, 24°, or 40° beam angles, ideal for galleries, museums and high-end interiors. Light that guides attention without distraction. The luminaire can effortlessly be mounted securely and easily at two points along the rail. Independent adjustment of each luminaire produces a continuous sleek line along the wall.



SECTION A-A  
SCALET 1

ID: 1400004	PL	FIRST DRAFT	
Rev: 001	App:		
General	Dimensions	Scale	Date: 16-2-2026
<b>Artiteq</b>		ILLUME DUO RAIL 2026	
Drawn: PL	Design no: SWD-000745	A3	Sheet 1 of 1
Approved: RVN			

# ILLUME BEAM

Precision in colour and light

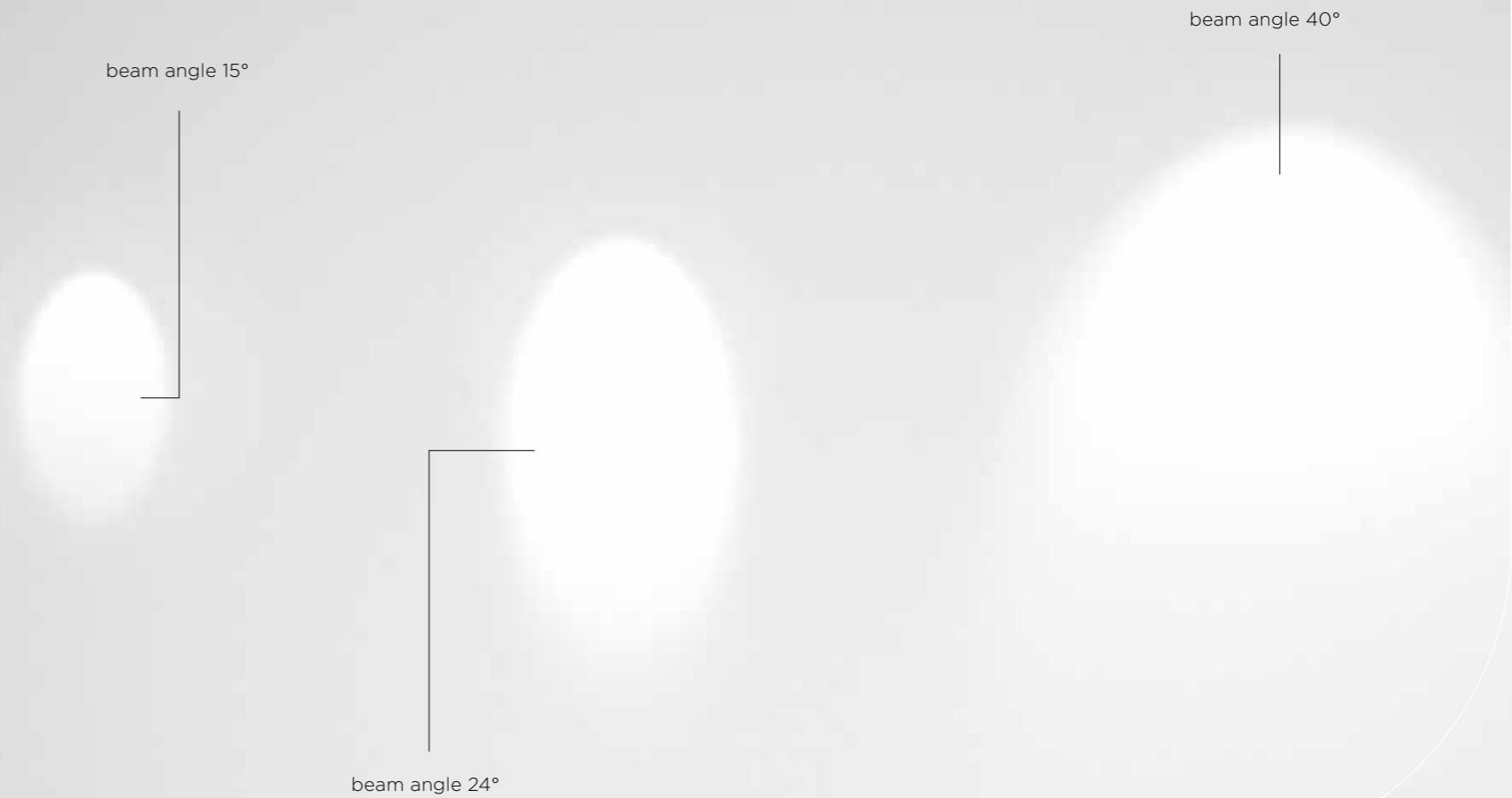
The entire collection is available in two popular colours: matt black and crisp matt white. The rails, luminaires and the connectors are all available in these colours. For the modern, trend-conscious user, a bronze (dark brown) luminaire is also available, adding a stylish touch to modern and contemporary interiors.



A variable beam angle ensures that both small and large works of art can be precisely illuminated, directing attention to the work of art, exactly where it belongs.

Standard options include 15° or 24° lenses.

Luminaires with wider beam angles, such as 40°, are also available.





WHERE LIGHT, ART  
AND ARCHITECTURE CONVERGE

# THE LED LIGHTING

What makes it so unique?



CRI 98

Bridgelux has a family of unique white LED lighting solutions, designed for Bridgelux V Series™ and V Series HD COB arrays. Patented chip, phosphorus and packaging technology allow the LED to deliver the highest achievable natural light quality for indoor lighting.

Bridgelux can be used in fixed colourpoint luminaires for full-spectrum daylight indoors.

Ideal environments include:

- architecture and museums
- residential lighting
- hospitality
- offices
- healthcare environments
- retail
- educational facilities

## TECHNICAL SPECS

TECHNICAL SPECS	
CE UKCA	
Type	Ilume Beam 50 cm
Colour	Black, white, bronze
Swivel	180° horizontal/45° vertical
Optics	24°/15°
LED light source	Bridgelux
CRI	98+ (R9 = 97)
Light output	710 lumen
LED colour	3000K
Colour Consistency	<3 SDCM
Eye Safety Risk Group	RG1
Power consumption	8.9 Watts
Constant Voltage	48V
Connection	Ilume Duo Rail
IP rating	IP20
Protection class	III
Certifications	CE, UKCA, RCM
Lifespan	>50,000h
LB Value	L90B10
Warranty	5 years



THE INTEGRATED LED BRIDGELUX  
CLOSEST TO NATURAL LIGHT

# THE NEW STANDARD IN NATURAL ARTIFICIAL LIGHT

Throughout history, the human visual system has evolved under the natural light of the sun and fire. Modern light sources strive to replicate this light as closely as possible, yet until now, there has been no objective standard for measuring the 'naturalness' of a light source.

Bridgelux changes that. Leveraging advanced spectral technology, the LED replicates natural light with unprecedented accuracy across the entire visible spectrum.

Using the **Average Spectral Difference (ASD)** method, any deviation from a light source in comparison to a standardised natural light source is measured and minimised.

The illuminated artworks and paintings will therefore look exactly the same with the Illume LED system as they do in daylight.

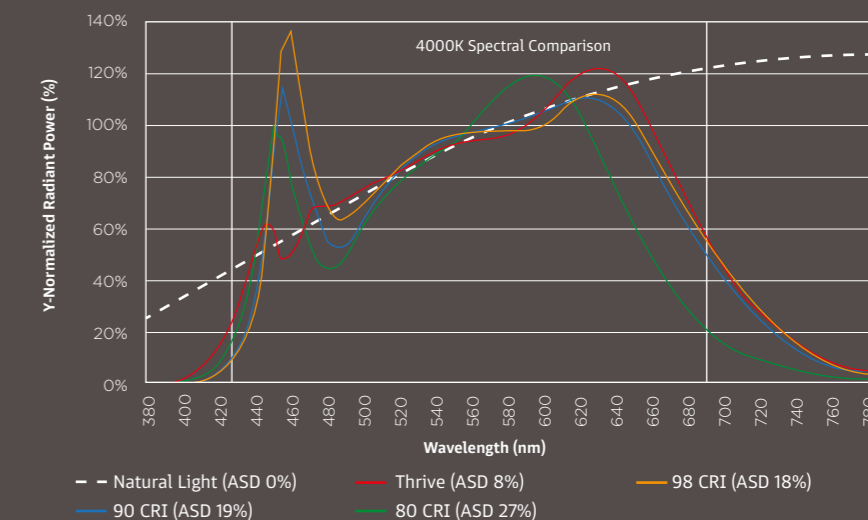


## Features:

- Optimised spectrum to closely match natural light
- 98 CRI typical, R1-R15 >90 and excellent TM-30 values: Rf 96 and Rg 99
- Typical ASD values of 11% (3000K)
- High efficiency, full-spectrum light solution
- No violet chip augmentation
- Hot colour targeted

## Benefits:

- Full consistent spectrum with fewer spectral spikes
- Natural and vivid colour rendering
- Best replication of natural light within the 425–690 nm range
- Greater energy savings and lower utility costs
- Economical, high-efficiency light solution
- Uniform and consistent white light under all application conditions
- Supported by a 5-year warranty



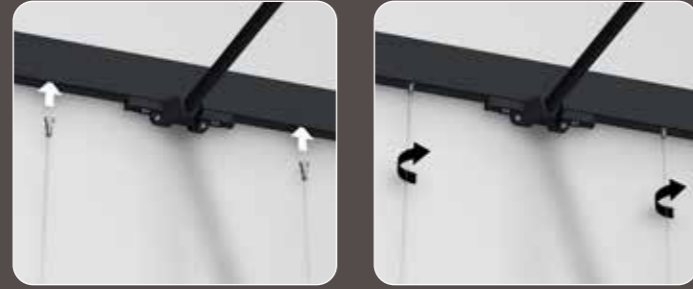
### Option 1

Hang with a single cable through the Illume Beam slot in the rail

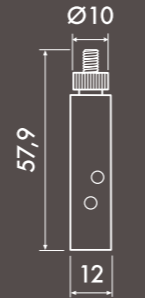


### Option 2

Hang with two cables in the rail



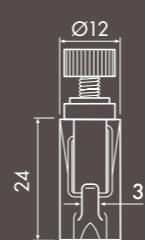
Micro Grip 1 mm  
30.41100 5/10 kg



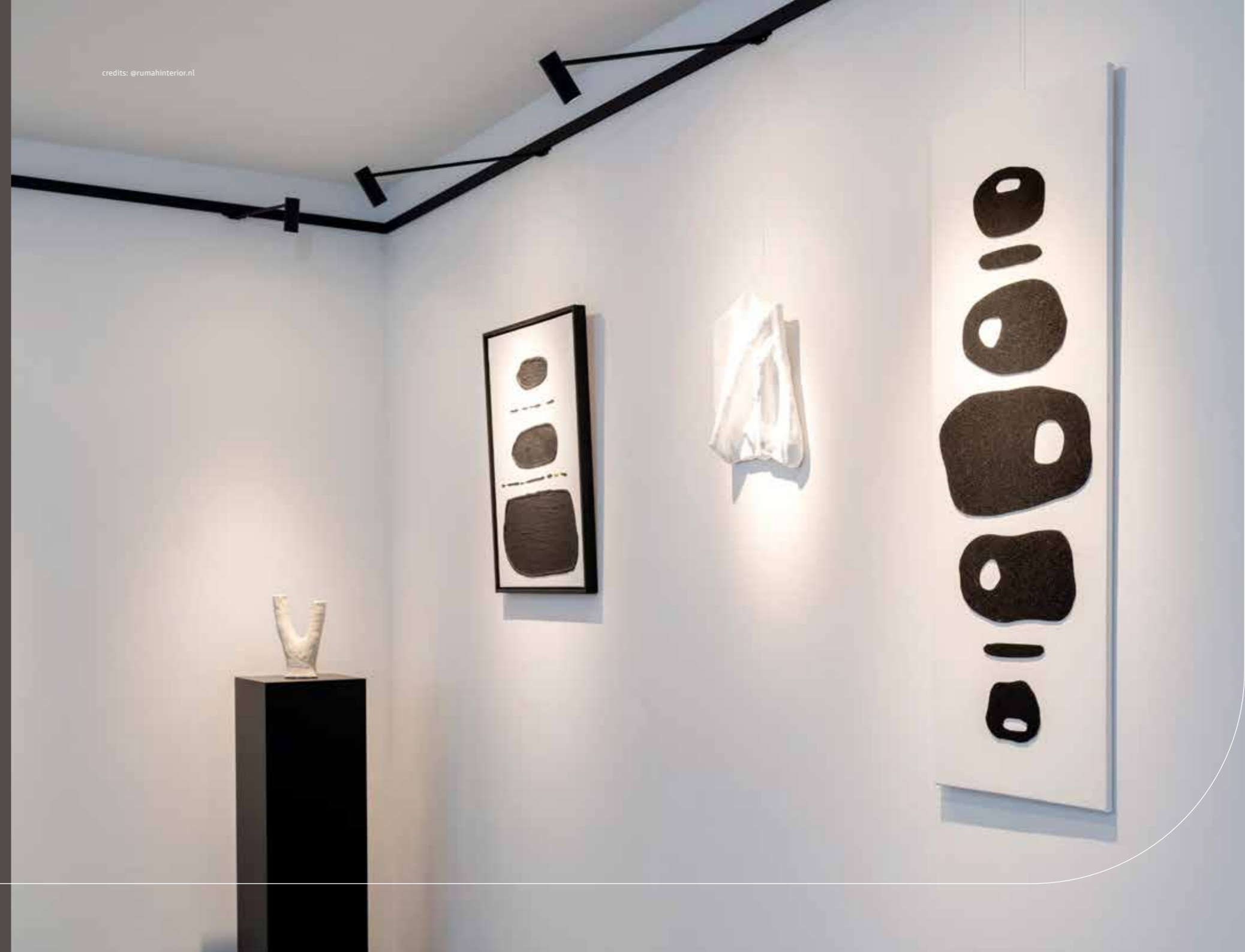
Track&Wire 1.2 - 1.8 mm  
TS30218 15-40 kg



Micro Grip 2 mm  
30.41200 20 kg



Auto Grip Lock Hook  
TS000218 15-40 kg



credits: @rumahinterior.nl

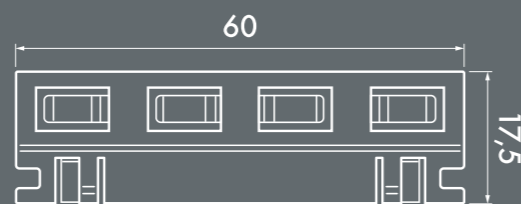
# CONNECTORS

Details that are concealed

The ultra-thin connectors click into the rail requiring no tools, while mirroring the system's aesthetic style. The result is a solution that is sleek, secure and elegant. Technology that remains invisible, yet unmistakable in its quality.



Elegant & simple



credits: @custom.debiest



# LIVE-END

## Multifunctional connection

The power supply connection functions as an extension of the rail, matching its size and sleek design. The power cable can be discreetly routed in three different positions, keeping it completely out of sight. A 3-metre-long power cable, available in black or white, allows the driver to be concealed where desired.



Option

# THE CASAMBI DRIVER



Casambi is a premium, wireless lighting control system, celebrated for its reliable Bluetooth Mesh technology. It offers simple installation without additional wiring, and universal and flexible use.

credits: @hollandesier



# DIALUX

## Data-driven lighting design

DIALux is advanced lighting design software that empowers designers and architects to create optimal lighting solutions for any space.

Artiteq provides special files for the Illume Duo rail, which can be uploaded into the DIALux software. Users define the space by entering parameters, such as dimensions, ceiling type, and light sources.

DIALux is an exceptional tool for lighting design, combining accurate, standard-compliant calculations (EN 12464, BREEAM) with realistic 3D visualisations. It enables professionals to analyse light distribution, lux values, and glare, optimise energy consumption, and visualise projects using actual product data from manufacturers, eliminating the risk of incorrect purchases.



## DEMO KIT

Article No. 45.90100



### Turning presentations into sales

A compelling story deserves an equally powerful presentation. The comprehensive Illume Duo demo kit allows you to not only explain the system but, more importantly, to let clients experience it first-hand.

An essential tool for anyone working with this innovative concept and aiming to impress clients.

## PRODUCT RANGE

### RAIL

<b>Illume Duo Rail White</b>	<b>Illume Duo Rail Black</b>
ARTICLE NO. 200 cm 45.11200	45.12200
ARTICLE NO. 300 cm 45.11300	45.12300

### BEAMS

<b>Beam White 50 cm</b>	<b>Beam Black 50 cm</b>	<b>Beam Black / Bronz 50 cm</b>
ARTICLE NO.15' 45.21510	45.22510	45.23510
ARTICLE NO.24' 45.21500	45.22500	45.23500

### ACCESSORIES

<b>Click &amp; Connect</b>	<b>Endcap White</b>	<b>Endcap Black</b>
ARTICLE NO. 45.31600	45.31400	45.31410

Including mounting hardware and end caps.

### ACCESSORIES

<b>Corner Connector White</b>	<b>Corner Connector Black</b>	<b>Screw 3.5 x 40 mm PVK PZ2 (incl. bit)</b>	<b>Plug 5 mm Fischer Duopower 5 x 25 mm</b>	<b>48V Connector Straight White</b>	<b>48V Connector Straight Black</b>	<b>48V Corner Connector Flex Set White</b>	<b>48V Corner Connector Flex Set Black</b>	<b>48V Driver Casambi 160VA</b>	<b>Wireless Switch Casambi</b>	<b>48V Live-end White (down)</b>	<b>48V Live-end Black (down)</b>
ARTICLE NO. 45.31420	45.31430	9.4945	9.4934	45.31300	45.31310	45.31320	45.31330	45.32120	45.33100	45.31500	45.31510

### ACCESSORIES

<b>48V Live-end White (side)</b>	<b>48V Live-end Black (side)</b>	<b>48V Live-end White (up)</b>	<b>48V Live-end Black (up)</b>
ARTICLE NO. 45.31520	45.31530	45.31540	45.31550

### WIRES

<b>Twister 1 mm Steelwire Black</b>	<b>Micro Grip 1 mm</b>
ARTICLE NO. 200 cm 09.63200	30.41100 5/10 kg

### WIRES

<b>Twister 2 mm Perlon</b>	<b>Twister 2 mm Steelwire</b>
09.23200	09.33200

<b>Micro Grip 2 mm</b>	<b>Track&amp;Wire 1.2 - 1.8 mm</b>	<b>Auto Grip Lock Hook</b>
30.41200 20 kg	T530218 15-40 kg	T5000218 15-40 kg



See other available lengths on our website.



ARTITEQ

Herastraat 39

5047 TX Tilburg

The Netherlands

+31 (0)13 572 90 70

info@artiteq.com

artiteq.com