



INTEGRATED PICTURE HANGING SYSTEMS

▶ WWW.ARTITEQ.COM

▶ INTEGRATED PICTURE HANGING SYSTEMS



Artiteq has developed a series of integrated picture hanging systems, which can be integrated in combination with recessed ceilings or plasterboard ceilings during new-build or renovations. The rail is integrated while the ceilings are being installed. These systems offer huge advantages to end users, with a hanging system becoming available throughout the entire space.

By selecting integrated hanging systems you set the standard for perfection. Combining picture hanging systems with recessed ceilings or plasterboard ceilings creates rooms with walls that can be designed flexibly and easily. And also for the long term, without damage to walls and without additional costs. This also results in considerable steps towards sustainable building management and cost savings.

- ✓ CUSTOMER REQUIREMENTS
TRANSLATED INTO PERFECT PROJECTS
- ✓ OPTIMUM EASE OF USE
- ✓ SIMPLE PICTURE HANGING
WITHOUT DAMAGE TO WALLS



PHOTO CREDITS: ARTITEQ SCANDINAVIA



**INTEGRATED PICTURE
HANGING SYSTEMS**
IN COMBINATION WITH RECESSED CEILINGS



ART STRIP



CEILING STRIP



**INTEGRATED PICTURE
HANGING SYSTEMS**
IN COMBINATION WITH PLASTERBOARD



**SHADOWLINE -
DRYWALL**



**SHADOWLINE -
MASONRY**



INTEGRATED PICTURE HANGING SYSTEMS

MOUNTED BEHIND CORNICE



DECO RAIL

DECO RAIL LED

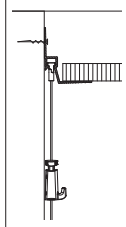
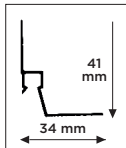


- ✓ FLEXIBLE HANGING WITHOUT DAMAGING THE WALLS
- ✓ HANGING RAIL INTEGRATED IN CORNER PROFILE
- ✓ STRONG & RELIABLE
- ✓ OPTIMUM EASE OF USE

CEILING STRIP



installation video



50
KG/M

10
YEAR
WARRANTY



WHITE RAL 9010

- ▶ Picture hanging rail integrated in corner profile - suitable for recessed ceilings that don't use a side strip

When recessed ceilings are installed during a building project, the Ceiling Strip offers many benefits. It replaces the corner profile used in recessed ceilings, and at the same time, creates a completely invisible picture hanging system. The flexible picture hanging system is hidden in the discreet shadow line along the edge of the recessed ceiling. This shadow line can also camouflage any imperfections in the wall, such as those masked by a side strip. The invisible picture hanging system offers the flexibility to quickly and easily hang paintings and other wall decorations.

✓ FLEXIBLE HANGING WITHOUT DAMAGING THE WALLS



Twister 2mm perlon / steel wire with Micro Grip hook 2mm Twister 1mm perlon / steel wire with Micro Grip hook 1mm



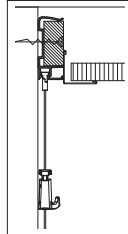
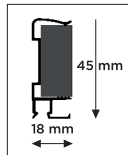


- ✓ FLEXIBLE HANGING WITHOUT DAMAGING THE WALLS
- ✓ HANGING RAIL INTEGRATED WITH THE CEILING
- ✓ STRONG & RELIABLE
- ✓ OPTIMUM EASE OF USE

ART STRIP

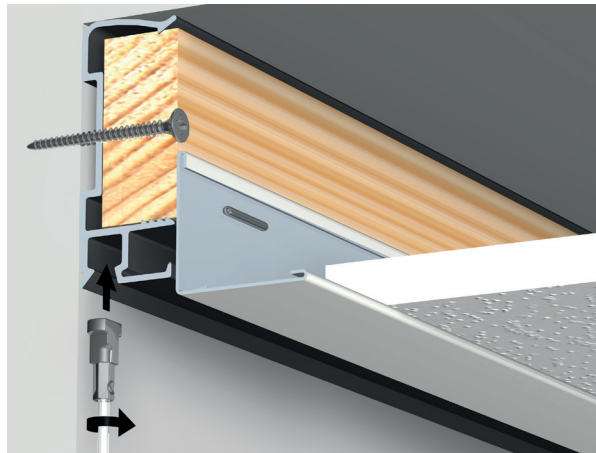


installation video



50
KG/M

10
YEAR
WARRANTY



BLACK

- ▶ Picture hanging rail integrated in side strip - suitable for recessed ceilings using a side strip

The Art Strip replaces the side strip which is used for the installation of recessed ceilings. The corner profile for the recessed ceiling is mounted to the Art Strip. Using the Art Strip for the installation of recessed ceilings, will make a picture hanging system available next to the ceiling. The picture hanging system will guarantee smooth and clean walls, and the flexibility to decorate them any way you like, without the need for tools.

✓ FLEXIBLE HANGING WITHOUT DAMAGING THE WALLS



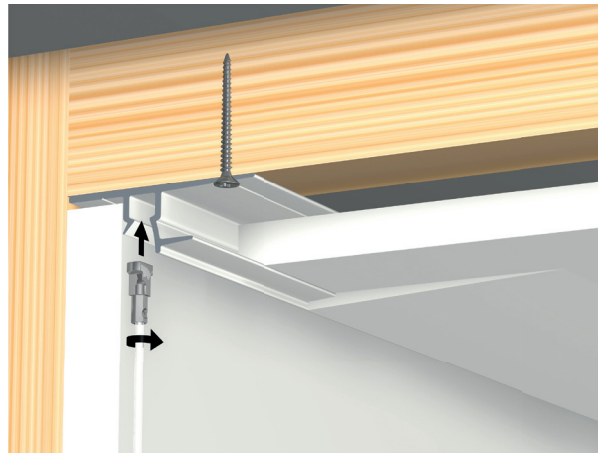
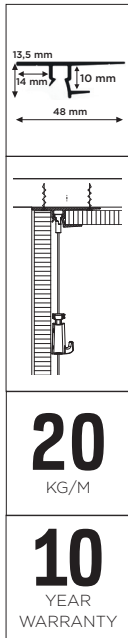
Twister 2mm perlon / steel wire with Micro Grip hook 2mm Twister 1mm perlon / steel wire with Micro Grip hook 1mm





- ✓ FLEXIBLE HANGING WITHOUT DAMAGING THE WALLS
- ✓ PICTURE HANGING SYSTEM FULLY INTEGRATED
- ✓ INSERT HANGING WIRE INTO THE RAIL WHEREVER YOU WANT
- ✓ WIRES HANG DIRECTLY FROM CEILING

SHADOWLINE - DRYWALL



WHITE RAL 9016

► Picture hanging rail for plasterboard ceilings and walls (drywall)

The Shadowline Drywall rail enables the placement of an invisible picture hanging system between plasterboard walls and ceiling panels. A discreet shadow line is the only element that appears between the wall and ceiling, and this is where the flexible picture hanging system is hidden. It is possible to install a hanging cord in the rail, anywhere you like in the room. Since the rail itself isn't visible, the hanging cords are suspended directly from the ceiling. Using the Shadowline ceiling system means you will always have a guarantee of smooth, clean walls, and the flexibility to decorate them any way you like, without the need for tools.

✓ FLEXIBLE HANGING WITHOUT DAMAGING THE WALLS



Twister 2mm perlon / steel wire with Micro Grip hook 2mm Twister 1mm perlon / steel wire with Micro Grip hook 1mm



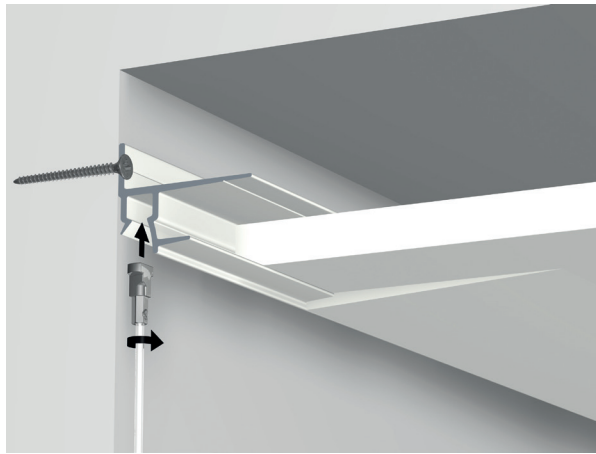


- ✓ FLEXIBLE HANGING WITHOUT DAMAGING THE WALLS
- ✓ PICTURE HANGING SYSTEM FULLY INTEGRATED
- ✓ INSERT HANGING WIRE INTO THE RAIL WHEREVER YOU WANT
- ✓ WIRES HANG DIRECTLY FROM CEILING

SHADOWLINE - MASONRY



<p>20 KG/M</p>
<p>10 YEAR WARRANTY</p>



WHITE RAL 9016

► Picture hanging rail for plasterboard ceilings and masonry walls

The Shadowline Masonry rail has been specially designed for use with plasterboard ceilings and masonry walls. The Shadowline rail is installed on a masonry wall during the building or renovation phase. The Shadowline profile disappears completely in the shadow line next to the ceiling panels, yet still offers all the advantages of a flexible hanging system: undamaged, clean walls and the flexibility to quickly and easily hang paintings and other wall decorations and move them around as desired.

✓ FLEXIBLE HANGING WITHOUT DAMAGING THE WALLS



Twister 2mm perlon / steel wire with Micro Grip hook 2mm Twister 1mm perlon / steel wire with Micro Grip hook 1mm



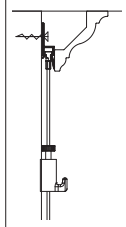
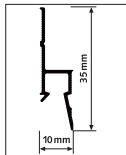


- ✓ FLEXIBLE HANGING WITHOUT DAMAGING THE WALLS
- ✓ HANGING RAIL MOUNTED BEHIND CORNICE
- ✓ INSTALLED WITH DIFFERENT STYLES OF CORNICE RAILS

DECO RAIL

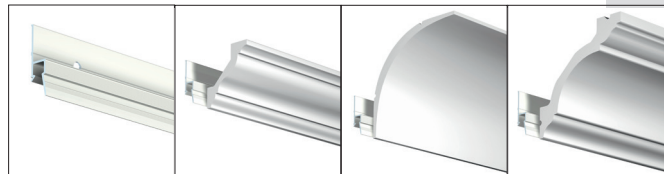


installation video



20
KG/M

10
YEAR
WARRANTY

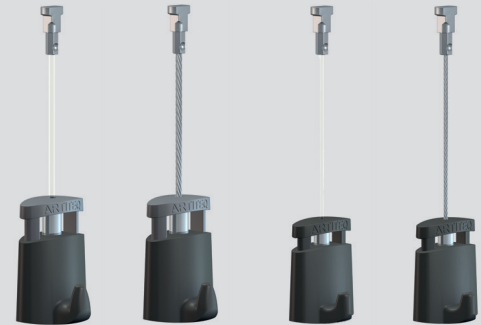


WHITE PRIMER RAL 9016

► Picture hanging rail integrated behind a cornice

The Deco Rail is a hanging rail for pictures and wall decorations that is mounted behind a cornice. The hanging rail system becomes invisible as a result, while still offering all the advantages of a flexible hanging system. Walls with a clean, smooth finish remain undamaged, even though it is still possible to hang and move paintings continually. Hanging wires may be clicked into the rail behind the cornice at any desired location. This is the major benefit of the Deco Rail; flexibility and a guarantee for a high-quality finish. There are many different styles of cornice rails, and this hanging rail can be installed behind every type.

✓ FLEXIBLE HANGING WITHOUT DAMAGING THE WALLS



Twister 2mm perlon / steel wire with Micro Grip hook 2mm

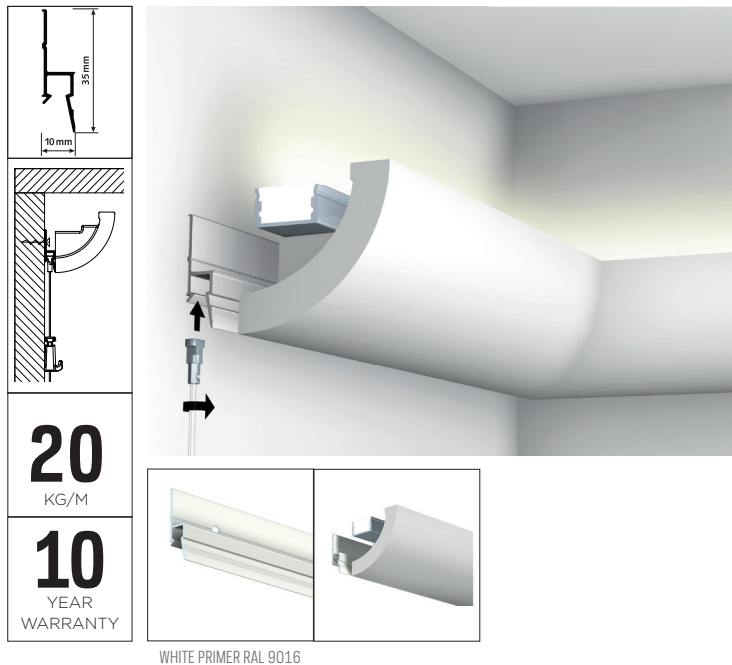
Twister 1mm perlon / steel wire with Micro Grip hook 1mm





- ✓ FLEXIBLE HANGING WITHOUT DAMAGING THE WALLS
- ✓ HANGING RAIL MOUNTED BEHIND CORNICE
- ✓ WITH LIGHTING PROFILE
- ✓ INSTALLED WITH DIFFERENT STYLES OF CORNICE RAILS

DECO RAIL LED



WHITE PRIMER RAL 9016

20
KG/M

10
YEAR
WARRANTY

► Picture hanging rail integrated behind a cornice with lighting profile

The Deco Rail LED is a hanging system and lighting profile, with subtle indirect LED lighting in one. With the lighting profile C362 by ORAC, you add indirect lighting by diffusing light from the wall. A modern, ambient finish within the interior. Combining the Deco Rail with the lighting profile results in an invisible hanging system and allows flexible adornment of the walls. With no damage to sleekly finished walls, pictures can be hung and moved around whenever you please. Hanging wires can be clicked anywhere along the rail behind the lighting profile. The indirect profile is supplied without the LED.

✓ FLEXIBLE HANGING WITHOUT
DAMAGING THE WALLS



Twister 2mm perlon / steel wire
with Micro Grip hook 2mm

Twister 1mm perlon / steel wire
with Micro Grip hook 1mm







ARTITEQ
HERASTRAAT 39
5047 TX TILBURG
THE NETHERLANDS
T +31 (0)13 572 90 70
INFO@ARTITEQ.COM

2495

▶ WWW.ARTITEQ.COM